



**Project Information**

Builder-Owner  
Martin Widerin

Location  
Wolfurt

Completion  
2002

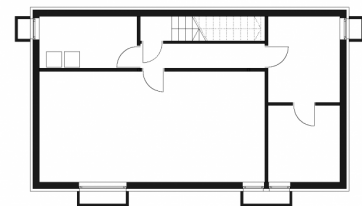
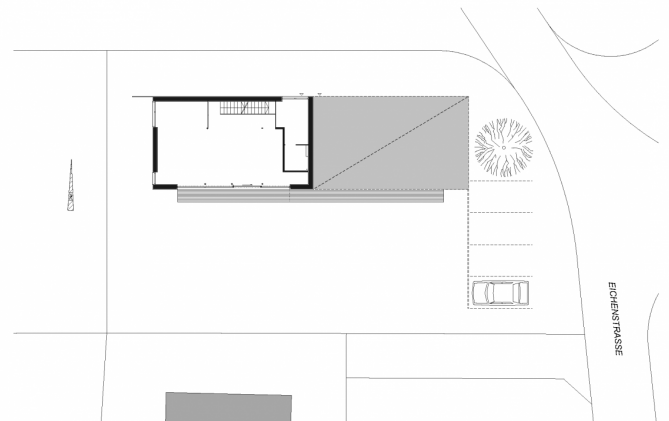
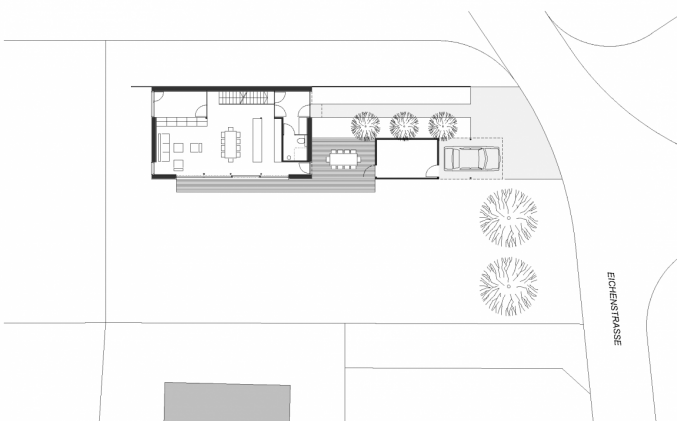
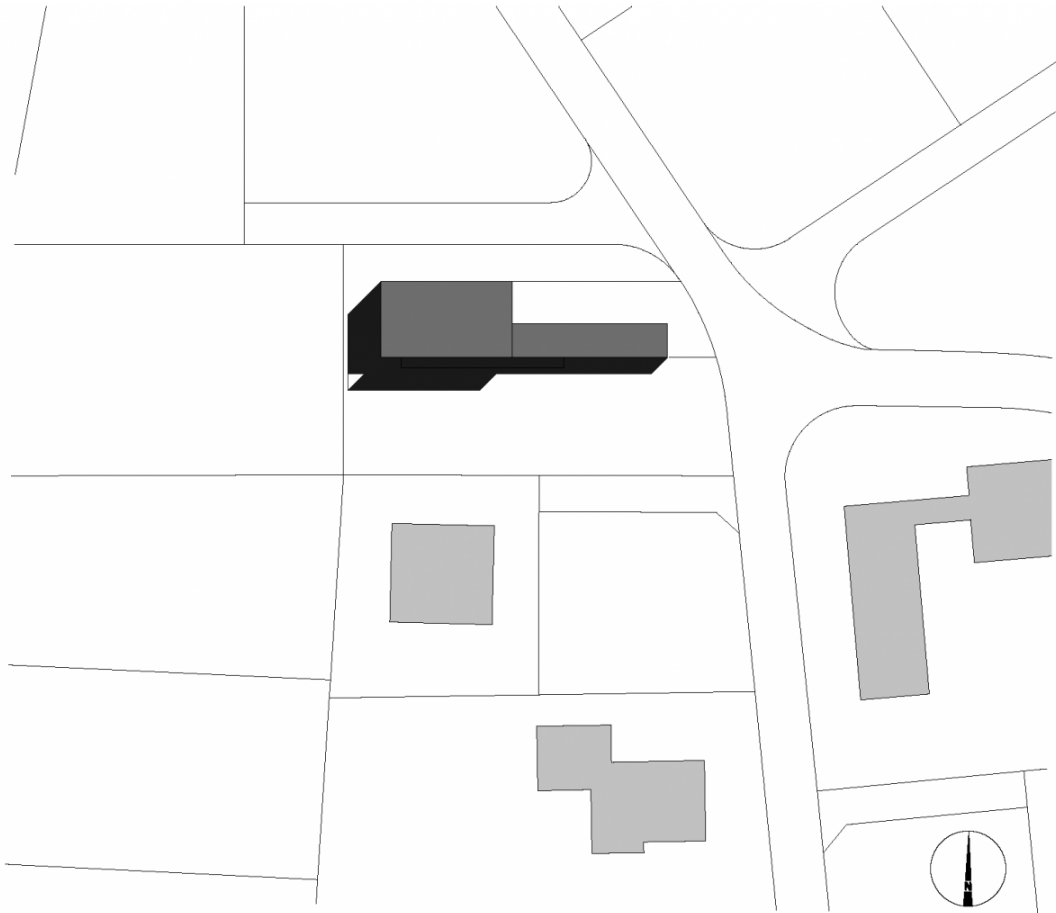
Project facts  
WNFL 145 m<sup>2</sup>, n.b.ar.L 214 m<sup>2</sup>,  
GFAL 268 m<sup>3</sup>, GBV 837m<sup>2</sup>

**A single family house designed to be sustainable and optimised for extension.**

This project is a timber single-family house that reaches a Passive House standard. It is a very compact building with a vertical larch timber framework with solar collectors integrated into the facade on its south side.

A photovoltaic system with a capacity of 3.4 kWh was installed on the roof. The system exceeded the regional requirements by achieving 269 units. For optimal utilisation of the property, the project is conceived as a semi-detached house, allowing the owners the possibility to extend.





## Project Stakeholders

### Project Leader

DI Stefan Hiebeler

### Colleague

DI (FH) Juliane Wiljotti

### Cost Planning

BM Ing. Norbert Kaufmann

### General Contractor

Berchtold Holzbau GmbH &  
CoKG, Wolfurt

### Electronics Planning

Planungsteam E-Plus GmbH,  
Egg

## Rights

Text Hermann Kaufmann +  
Partner ZT GmbH, Englisch:  
Bronwen Rolls  
Foto Bruno Klomfar