



### Project Information

#### Builder-Owner

Dr. Johannes Eberle, Bern

#### Location

Bregenz

#### Completion

2013

#### Project facts

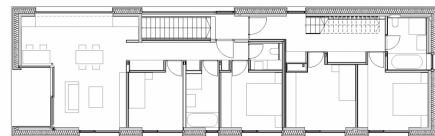
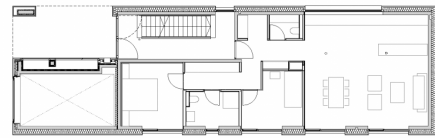
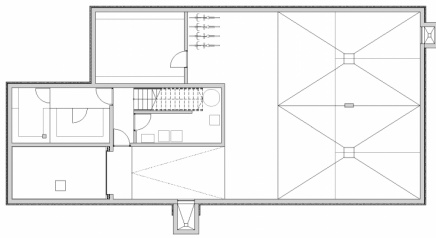
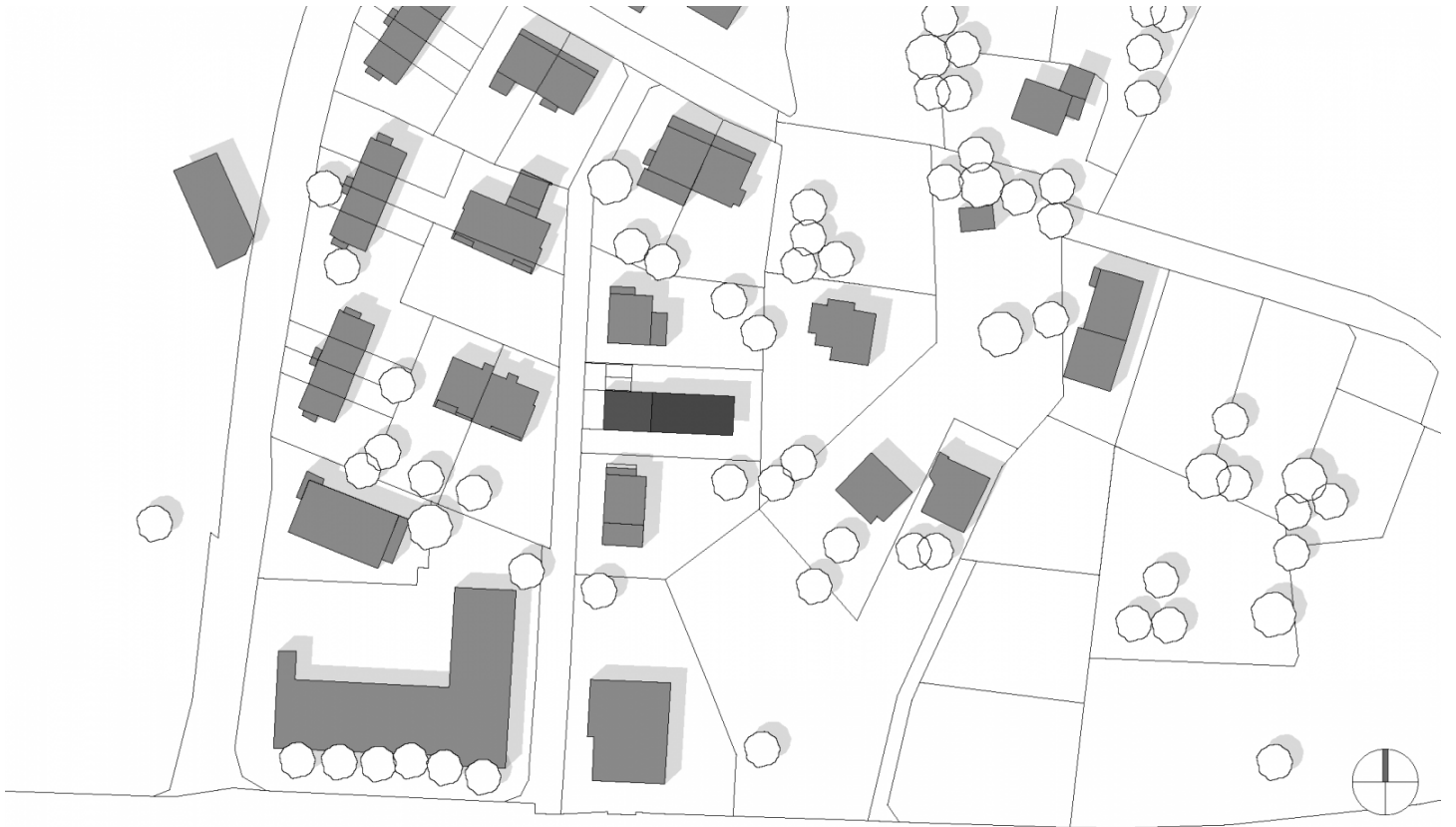
WNF 289,14 m<sup>2</sup>, n.b.ar. 523,45 m<sup>2</sup>,

GFA 709 m<sup>2</sup>, GBV 2.195 m<sup>3</sup>

Energy 22 kWh/m<sup>2</sup>a







## Project Stakeholders

### Project Leader

DI Stefan Hiebeler

### Colleague

DI (FH) Thomas Weitershagen

### Cost Planning

Bmst. Gerold Hämmerle

### Building Site Manager

Bmst. Gerold Hämmerle

### Structural Engineering

Ingo Gehrler, Höchst

### Heating Ventilation and

### Sanitary Planning

Technisches Büro Herbert Roth,  
Lauterach

### Electronics Planning

elplan Lingg Elektroplanungs  
GmbH, Schoppernau

### Building Physics/Acoustics

Thomas Schwarz - WSS,  
Wärme- & Schallschutztechnik  
Schwarz, Frastanz

## Rights

Foto Norman Radon

