



Project Information

Client

Sutterlüty GesmbH & Co, Egg

Location

Rankweil

Finalisation

2019

Project Facts

NGF 2485,5 m², BGF 3658 m²,

BRI 16987,5 m³

Energie 57 kWh/m²a

Arcades over a calm and enjoyable space

A compact structure replaces the outdated large-scale supermarket in the mixed use zone, north of Rankweil railway station. The playful outdoor space is created by carefully placed plantings to create clear access routes and ground-level parking.

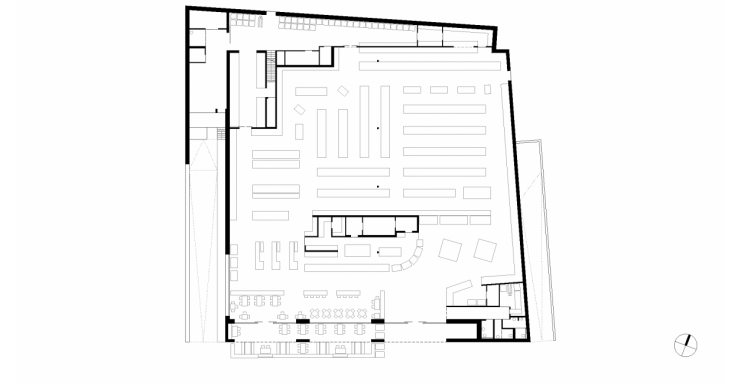
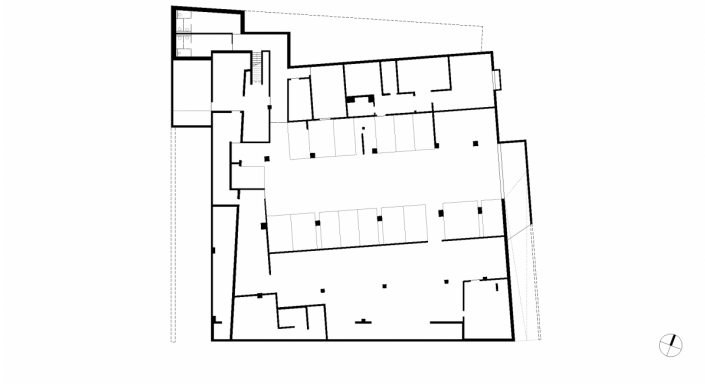
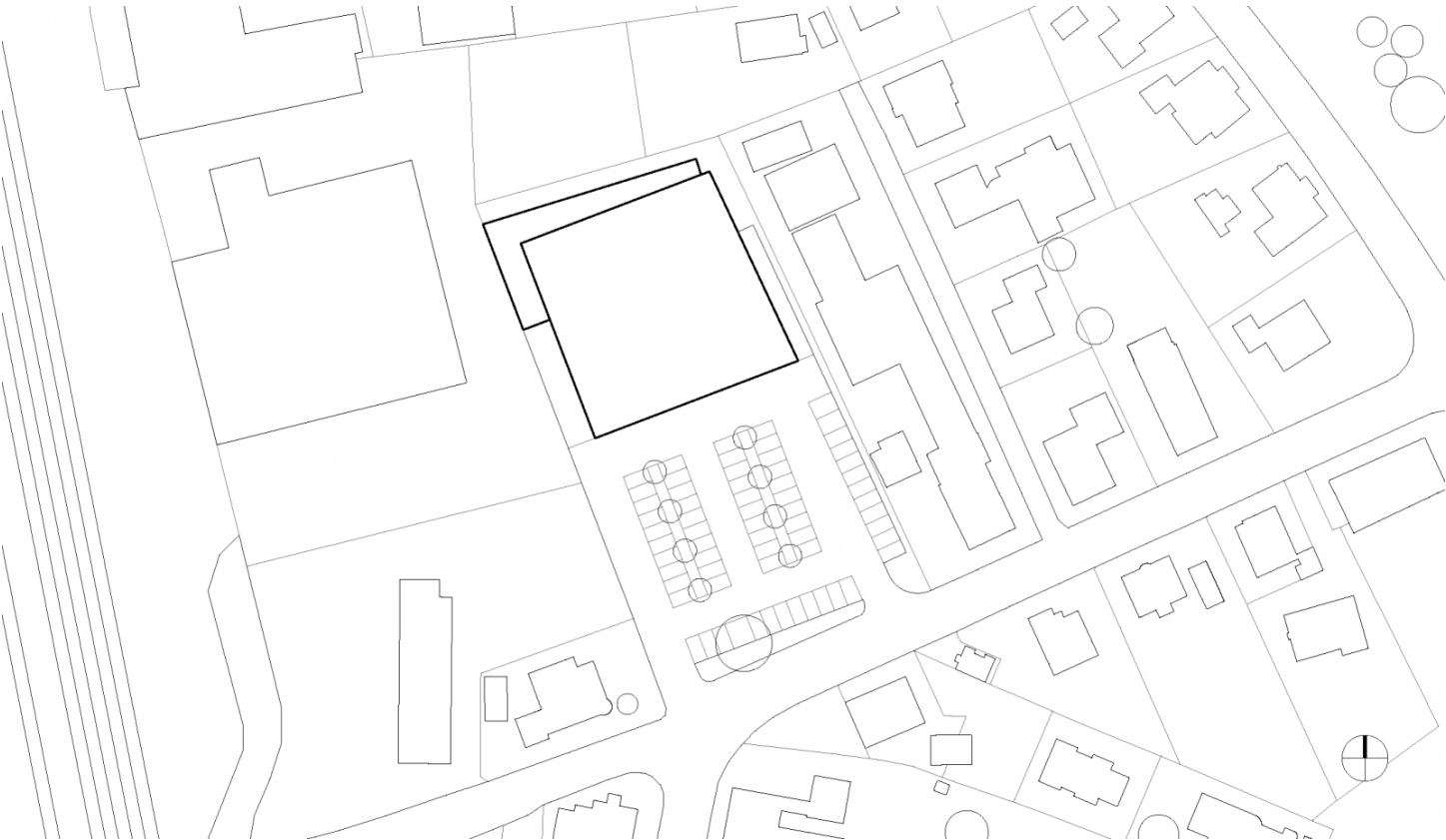
The solid basement contains technical rooms, staff cloakrooms and internal underground parking spaces, which are accessed by a ramp on the east side of the building. The new building above is a hybrid construction. The central volume was made as a pure timber construction with a wide-span roof structure. The main girder runs longitudinally through the centre of the hall and has spans of about 9 metres between the supports sections of hollow steel. The slender dimensioned secondary girders are arranged at close intervals on the same level and span over 20 metres to the enclosing walls.

A service zone wraps around the back of the volume as an angular structure made of exposed concrete. The arcade on the main façade was also made of solid concrete and placed in front of the building as a prefabricated construction. This timeless architectural motif divides the space between the circulation areas and the sales and gastronomy zone of the main hall. This creates a place of tranquillity that protects its visitors from

the weather or excessive sunlight and, as the seating area of the bistro, invites them to linger and enjoy themselves.

Since all exterior surfaces of the main volume are covered with either glazing or spruce boards, only the intermediate zone of the archway and the fine parabolic pilaster strips on the façade appear as concrete surfaces. The interior is lined with wall elements made of coarse chipboard and this creates the feeling of a closed wooden body in conjunction with the visible roof structure. This gives the large hall a warm and cosy atmosphere with pleasant acoustics.





Project Stakeholders

Project Leader

DI Stefan Hiebeler

Colleague

DI Christoph Dünser

Martin Rümmele

Cost Planning

Schmelzenbach Baumanagment
GmbH, Riefensberg

Project Stakeholders

Building Site Manager

Schmelzenbach Baumanagment,
Riefensberg

Mader +Flatz, Bregenz

Heating Ventilation and Sanitary Planning

BHM Ingenieure, Feldkirch

Building Physics

Künz Lothar ZT GmbH, Hard

Electronics Planning

Elektrodesign Fröhle Rene, Schlins

Water Landscape Design

Wasserplan Fischer + Herda ZT
GmbH, Hohenems

Transport Planning

Besch+ Partner, Feldkirch

Rights

Foto Arch. DI Roland

Wehinger

Text Tina Mott

