



### Project Information

**Builder-Owner**  
Julia Kehl & Leonard Fischer,  
Burgebrach

**Location**  
Burgebrach

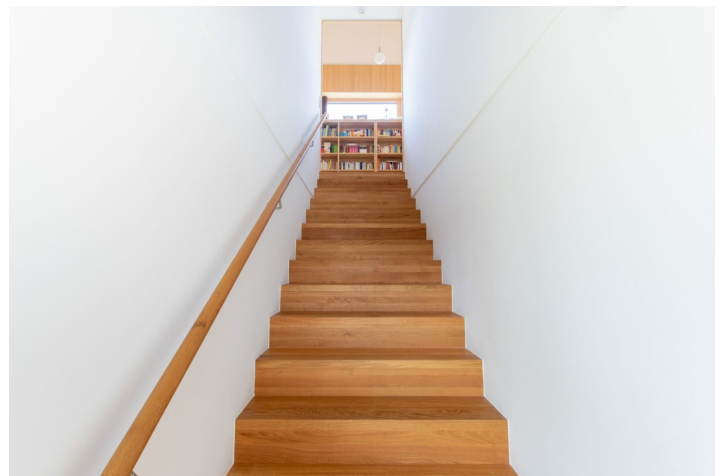
**Completion**  
2017

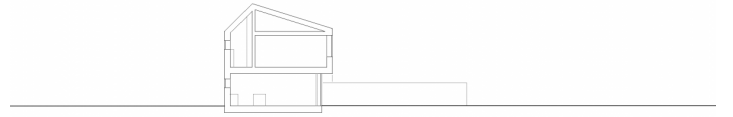
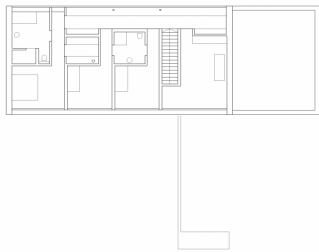
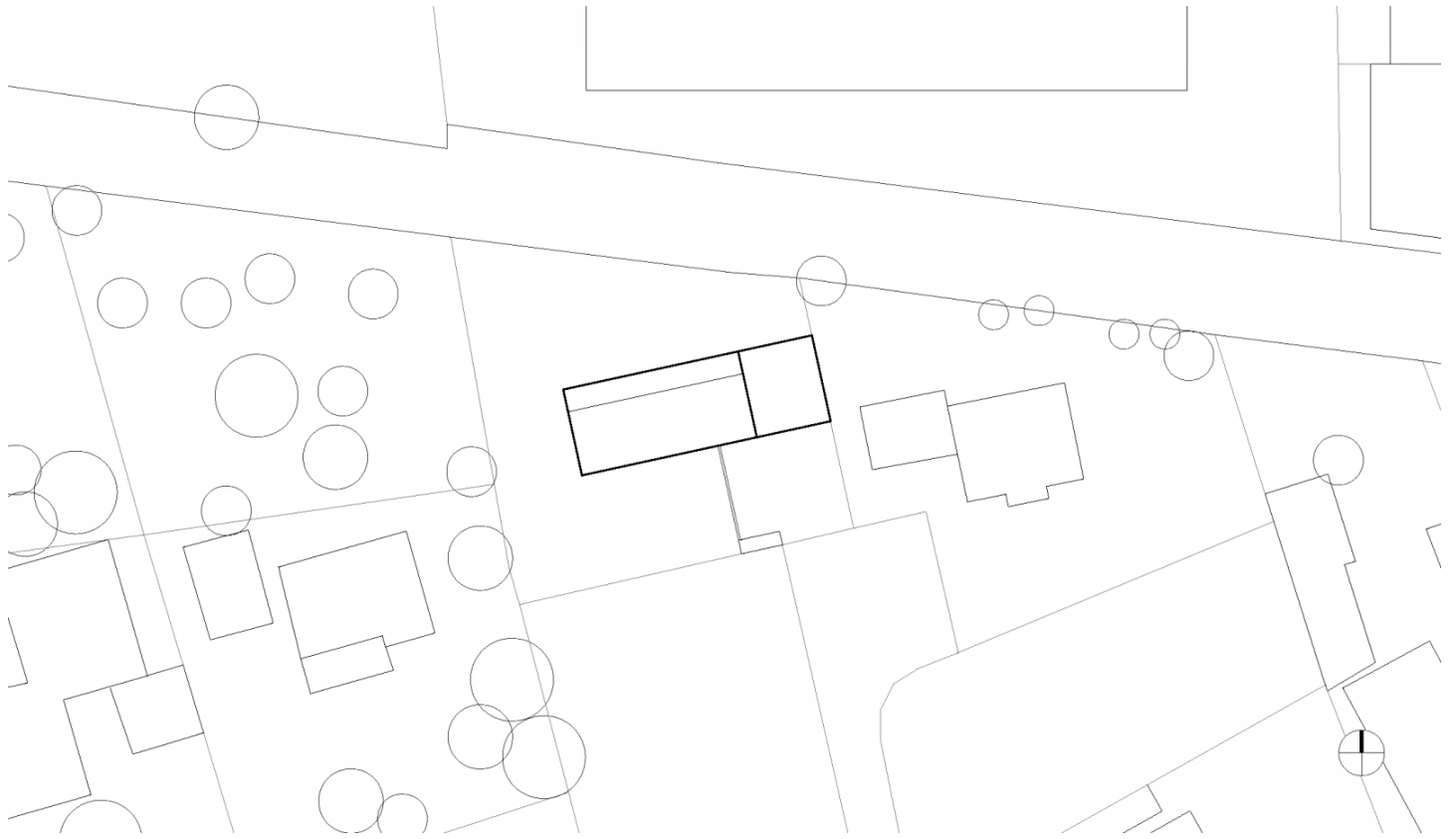
**Project facts**  
NGF 260 m<sup>2</sup>, BGF 335 m<sup>2</sup>,  
BRI 1.335 m<sup>3</sup>  
Energie 34 kWh/m<sup>2</sup>a

### Generosity through reduction.

As visitors on holiday to Bregenzerwald, thrilled by the Vorarlberg architecture, the family of construction developers wanted a carefully thought out house built from timber. It should also find its place in the context of their local community in Upper Franconia. The result is a tailor-made building volume whose rooms blend into each other, alternating from dense to generous. The living and sleeping areas open onto the sun filled garden planted with vegetation. On the north side the wide view onto the landscape is played out through ribbon windows. Regional craftsmen worked on the construction site, the high-quality interior construction with flush-mounted floor-frame doors and wall-mounted beetles made of silver fir, was entrusted to a local carpenter.







## Project Stakeholders

### Project Leader

DI Mathias Schädler

### Cost Planning

Arch. DI Roland Wehinger

Project Stakeholders

### Building Site Manager

Rainer Kehl, Erlangen

### Structural Analysis

Andreas Bilz, Kitzingen

### Geotechnical Engineering

Dr. Dafner Geoberatung UG,  
Forchheim

### Energy Consulting

Ingenieurbüro Fischer - Dipl.-  
Ing.(FH) Alfons Fischer,  
Dinkelsbühl

### Suburban Architect/Civil Engineer

Zweiplus Architekten GmbH,  
Bamberg

## Rights

Text Tina Mott

Foto Arch. DI Roland

Wehinger

