



Project Information

Client

Dr. Rainer De Meyer

Location

Dornbirn

Finalisation

2023

Project Facts

NGF 641,06m², BGF 819,0 m²,

BRI 2.589,77 m³

Energie 35,7 kWh/m²a

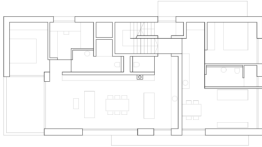
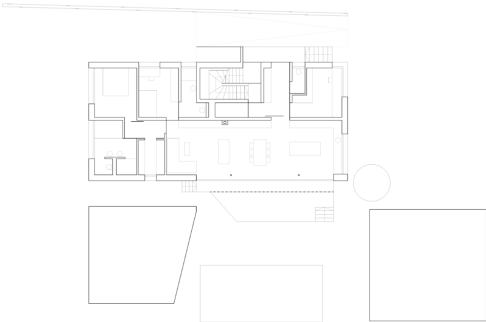
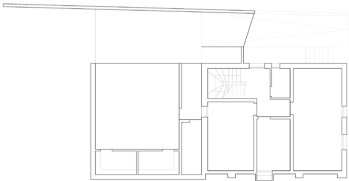
Growing inwards

The central residential quarter to the east of Dornbirn's market square is characterised by a variety of buildings from different eras, reflecting the successive development of this urban zone. To preserve the green character of the neighbourhood this house had to grow inside its own footprint and existing volume.

The existing single-family house was removed down to the basement ceiling and the basement was extended by a double garage. This base of reinforced concrete served as the foundation for a three-storey wooden structure that houses four residential units.

The living rooms and bedrooms are mainly oriented to the south or west to guarantee optimal sunlight and views towards the distant mountains. While the interiors were lined with high-quality materials, the façades are covered with rough-sawn formwork made of silver fir, which blends in with the mature surroundings.





Project Stakeholders

Project Leader

Arch. DI Roland Wehinger

Colleague

DI (FH) Juliane Wiljotti

Cost Planning

Arch. DI Roland Wehinger

Project Stakeholders

merz kley partner ZT GmbH,
Dornbirn

Heating Ventilation and Sanitary

Planning

Koller&Partner Ges.m.b.H., Bregenz

Electronics Planning

elplan -Lingg Elektroplanungs
GmbH, Schopfernau

Building Physics

Dipl. Ing. Bernhard Weithas GmbH,
Lauterach

Survey

AVD Vermessung ZT GmbH,
Bregenz

Rights

Foto Arch. DI Roland

Wehinger

Text Tina Mott

Translation Bronwen Rolls

