



Project Information

Builder-Owner
Linth Möbel AG, Kaltbrunn

Location
Kaltbrunn

Completion
1995

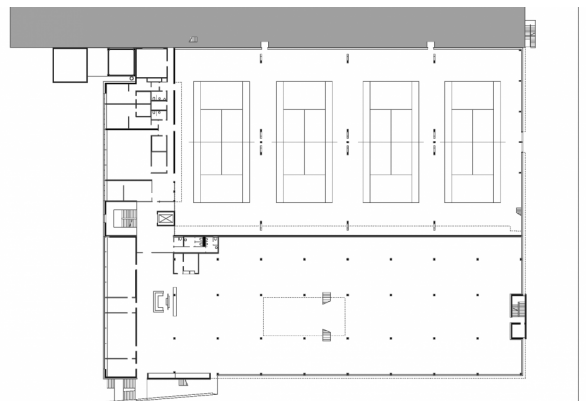
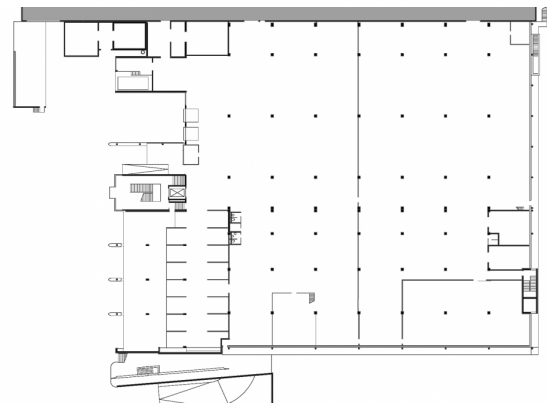
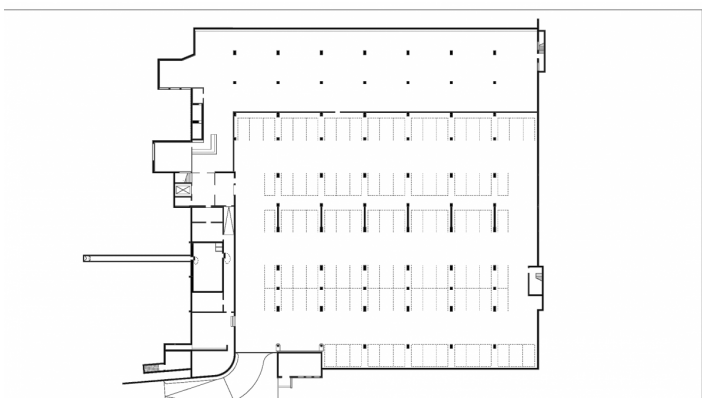
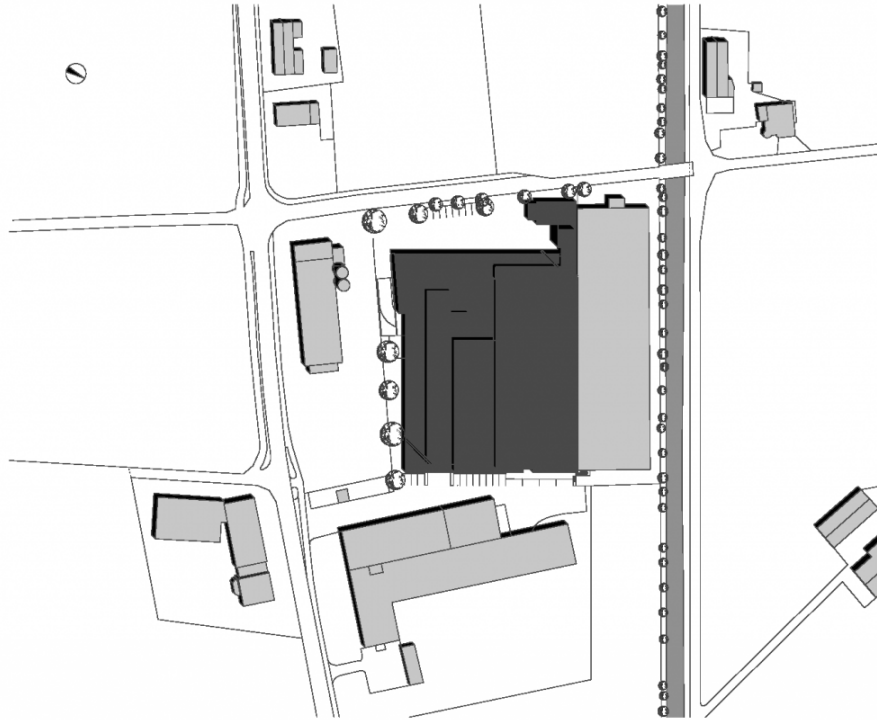
Project facts
n.b.ar. 5.400,00 m², GFA 13.400,00
m²,
GBV 19.000,00 m³

**Timber headquarters optimised for functionality,
that will weather into the landscape.**

What is more suitable than to create the new
headquarters of a timber furniture manufacturer
than in very material of their trade?

A diverse collection of functions including exhibition
space, warehousing, the office, the restaurant, and
a tennis hall with associated changing rooms, are
organised in a compact building. The development
receives its formal expression from the
requirements of fire protection and timber
preservation. The result is a large timber building,
natural and sleek, that will gradually and naturally
“weather” into the landscape.





Project Stakeholders

Colleague

Alois Ratz

Bmst. Jürgen Hagspiel

Cost Planning

Anliker AG, Luzern (CH)

Structural Engineering

DI Ingo Gehrer, Höchst

Structural Engineering

Ing. Ferdi Heeb, Schaan (FL)

Heating Ventilation and

Sanitary Planning

Firma Muther, Luzern (CH)

Electronics Planning

Firma Bühlmann, Luzern (CH)

Rights

Text Hermann Kaufmann +

Partner ZT GmbH, Englisch:

Bronwen Rolls

Foto Myrzik und Jarisch