



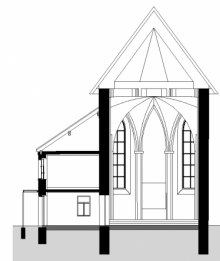
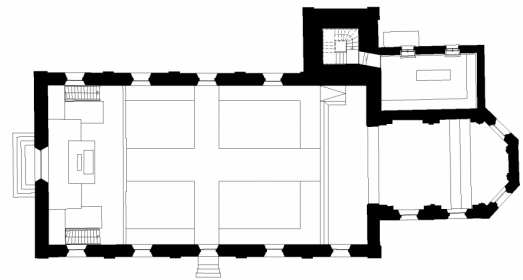
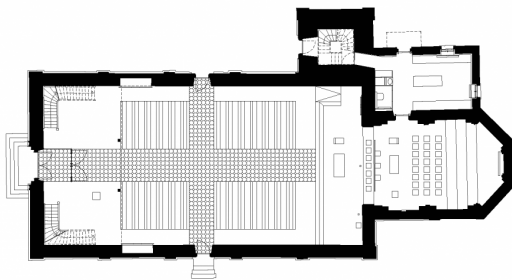
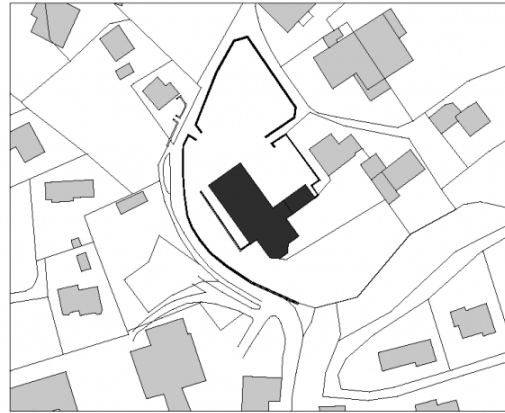
## Project Information

Builder-Owner  
Pfarre Kennelbach

Location  
Kennelbach

Completion  
2003





## Project Stakeholders

### Project Leader

DI Simone Roos

### Cost Planning

Bmst. Ing Norbert Kaufmann

### Building Site Manager

Harald Seidler

Project Stakeholders

## Structural Engineering

Mader & Flatz Ziviltechniker  
GmbH, Bregenz

## Heating Ventilation and

### Sanitary Planning

GMI Ingenieure, Dornbirn

## Electronics Planning

Willi Meusburger, Bezau

## Akustik

Ing. Karl Brüstle, Dornbirn

## Rights

Foto Bruno Klomfar