



Project Information

Builder-Owner
Natter / Kapfer, Lauterach

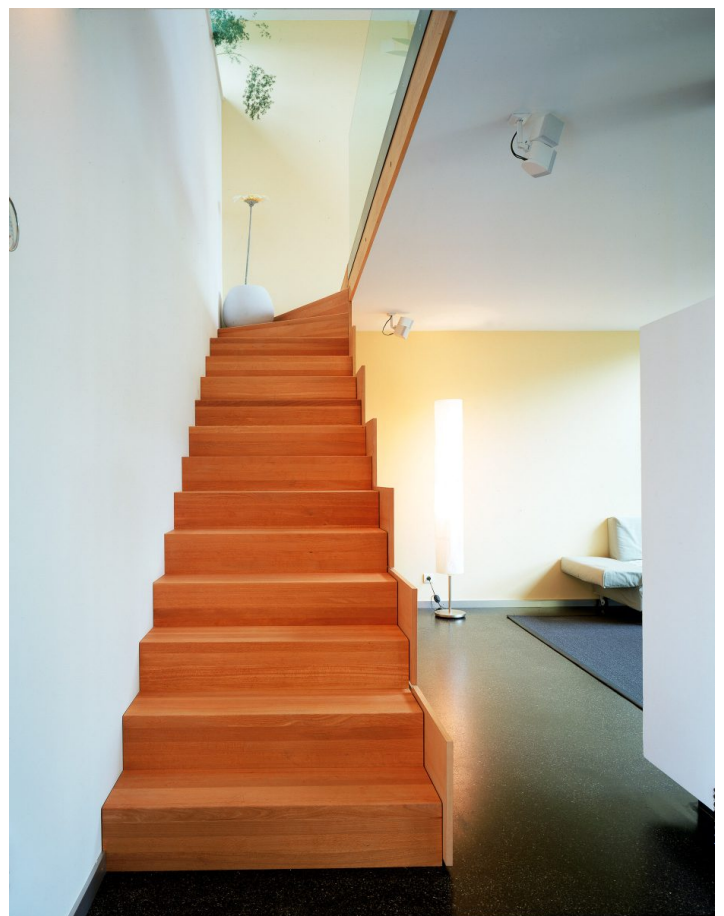
Location
Lauterach

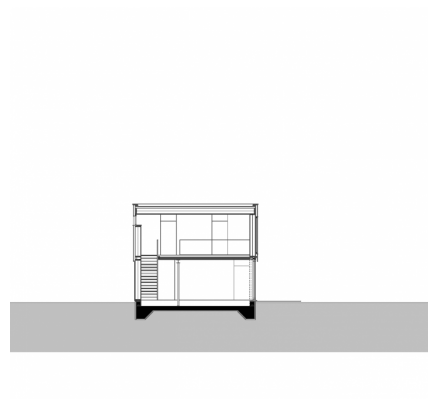
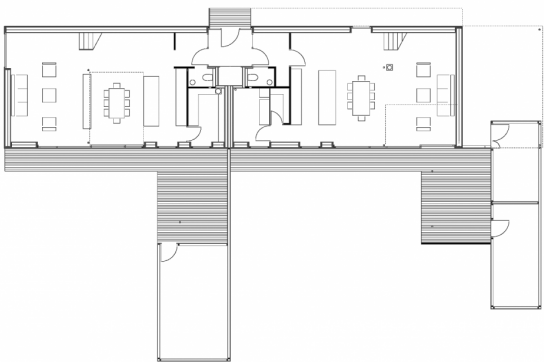
Completion
2000

Project facts
n.b.ar. 388,00 m², GFA 420,00m²,
GBV 1.200,00 m³

**High-quality and unobservable retreat areas
increase living quality.**

A large building plot was reconfigured, due to the demolition of a centrally placed house, allowing two duplex units to be built. The elongated main structure, with its exact southern orientation forms the backbone. The secondary structures create protected gardens and courtyards. This example shows how high-quality and unobservable retreat areas can be created to increase the living quality in a detached single-family home.





Project Stakeholders

Colleague

Richard Forer

Structural Engineering

Mader & Flatz Ziviltechniker
GmbH, Bregenz

Rights

Text Architekten Hermann
Kaufmann, Englisch:
Bronwen Rolls
Foto Ignacio Martinez