



Project Information

Client

Technische Universität München,
München

Location

Garching

Finalisation

2010

Project Facts

NGF 600 m², BGF 850 m²,

BRI 2160 m³

Energie 28 kWh/m²a

A versatile, safe and welcoming day centre that also focuses on sustainability and cost-effective operations

The site of the Ingeborg-Ortner-Children's Home works around the urban planning of the original road layout. In order to create a cocoon for the children using the building, the whole structure is pivoted to create an enclosed courtyard and multiple concealed and secure play-zones. The open, and welcoming, entrance faces towards the main road, greeting the families who use the facilities. Inside there is a central foyer which houses the senior management department, the kitchens and multipurpose hall. The large internal entrance hall is opened up and exposed along its western side. The flat green roof of the building blends in with the surround green spaces. Inside the building the colours of the natural building material are dominant, and where needed an additional palate of accent colours have been added to create ambience and differentiation between areas.

»The result is high quality architectural work, the basis of which is the understanding of materials and design.«

Holzbaupreis Bayern 2010

The main structural elements of the ground-floor are glue laminated timber walls and beamed ceilings. These are open timber beams with dimensions of 40/240 mm, which are spaces apart at 250 mm intervals. They form the support for the roof structure, contribute significantly to the architectural design and create exceptional acoustics. The ceilings of the spacious entrance foyer, the corridors and the functional areas are built, like the walls, in cross-laminated timber. As a special design feature, all wall and ceiling timber surfaces are visible.

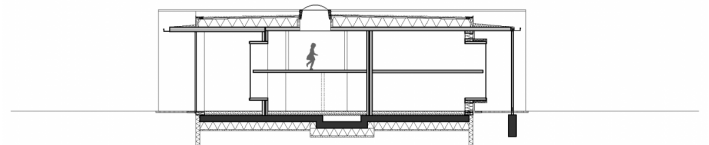
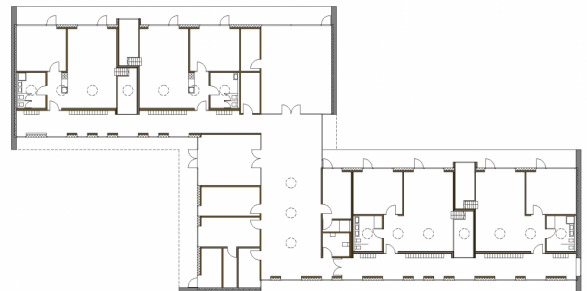
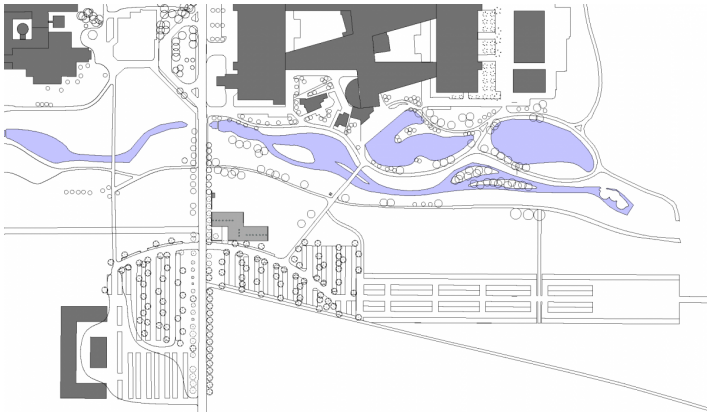
The building envelope includes generous floor-to-ceiling glass surfaces and perfectly executed timber walls.

The surfaces are largely untreated. Generous canopies, which also provide sun protection, serve to protect the recessed facade surfaces from the elements. The flat roof is beautifully landscaped. In order to ensure the most flexibility of use, the day care centre was divided into three units. Each unit can be used independently of the others. They consist of lounges and corridors, the corridors are also available space for the children to use as play areas. The individual use units are separated by fire-retardant, room partitioning.

The aim was to develop an energy-efficient building that goes well beyond the current EnEV standard. The building envelope is optimised, while a decentralised ventilation system, with heat recovery, significantly reduces energy consumption again.

Automatic opening skylights ensure night cooling in the hot summer months. The cantilevered canopies provide, in addition to the constructive wood protection, heat protection in the summer together with the vertical awnings. Great importance has been given to the use of materials with low primary energy requirements and low maintenance costs, in order to enable sustainable and cost-effective operation of the day centre.





Project Stakeholders

Cooperation

aichner kazzner architekten,
München

Project Leader

DI Marco Bumeder

Colleague

DI Elvira Sommer, DI Dominik
Brummer

Cost Planning

Arch. DI Roland Wehinger

Building Site Manager

Elmar Schaugg

Project Stakeholders

Structural Engineering Timber

Construction

bauart Konstruktions GmbH &
Co KG, München

Heating Ventilation and

Sanitary Planning

Springl, Ingenieurbüro für
Haustechnik, Ingolstadt

Electronics Planning

Ing.Büro Hübner & Kollegen
GmbH, München

Landscape Planning

Keller Damm Kollegen GmbH,
München

Awards

Bayerischer Holzbaupreis
2010 (Preis)

Holzbaupreis Vorarlberg
2011 (Auszeichnung Außer
Landes)

Rights

Text Hermann Kaufmann +
Partner ZT GmbH, Englisch:
Bronwen Rolls
Foto Henning Köpke

