



## Project Information

### Builder-Owner

Metzler-Holz KG, Schwarzach

### Location

Bezau

### Completion

1995

### Project facts

NGF 1.800,00 m<sup>2</sup>, BGF 1.900,00 m<sup>2</sup>,  
BRI 19.800,00 m<sup>3</sup>

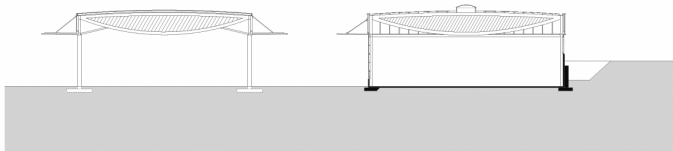
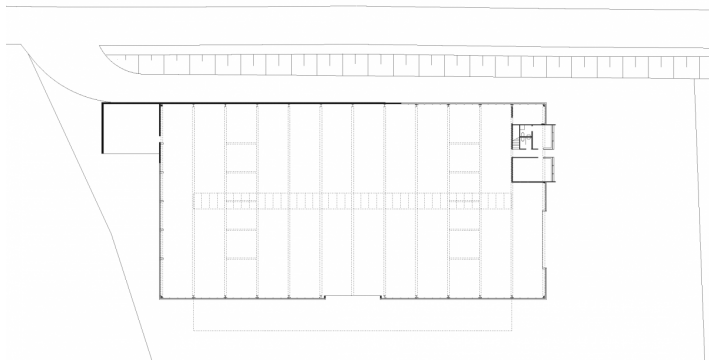
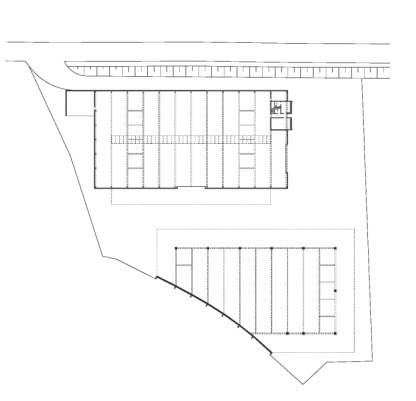
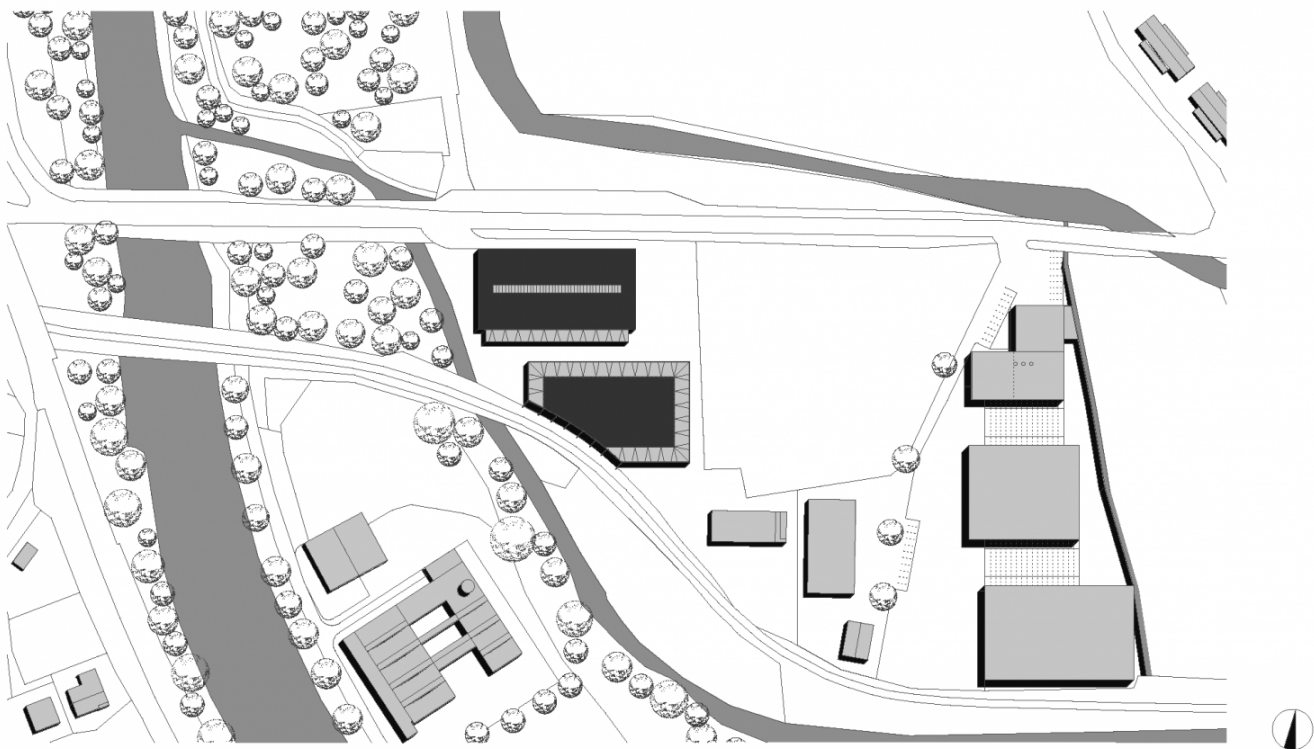
## What is more obvious a solution than building a warehouse for timber, from timber?

The sawmill and timber trading company needed a 30 x 60 meter, pillar-free hall for the storage of dried timber, as well as for the air drying of various products.

With the requirement to use solid timber for the construction as much as possible, the idea came for [ZT](#) to use fish-belly girders with a solid top chord, as well as diagonals of crossed 30 mm bar boards, and a glued bottom chord developed as a drawstring. These beams lie on clamped steel columns. The purlins were coupled, with about 1.5 meters overlapping on the 5 meter grid.

Arranged in the construction level, glass band (clear glass with aluminium profiles clamped on timber supports) forms a slight raised end of the massive structure. The underlying form is natural as the entire building, and fits the base area in an open horizontal form-work.





## Project Stakeholders

### Colleague

Bmst. Jürgen Hagspiel

## Project Stakeholders

### Structural Engineering

DI Ingo Gehrler, Höchst

## Awards

Holzbaupreis Vorarlberg

1998

## Rights

Text Hermann Kaufmann +

Partner ZT GmbH, Englisch:

Bronwen Rolls

Foto Bruno Klomfar