



**Project Information**

**Client**

Sohm Holzbautechnik GesmbH,  
Alberschwende

**Location**

Alberschwende

**Finalisation**

2009

**Project Facts**

NGF 612m<sup>2</sup>,  
BGF heated 815 (1.300) m<sup>2</sup>,  
BRI heated 2.670 m<sup>3</sup>

**Innovative approaches to traditional solid timber construction creates a whole new perspective.**

The innovative timber company Sohm, in Alberschwende in Bregenzerwald had the opportunity to expand onto newly purchased land. The steep, sloping land allowed for the integration of storage space and a new heating installation system in the basement. It also allowed for the construction of a covered, but open, multi-purpose hall with a two-storey office, rising above the ground floor.

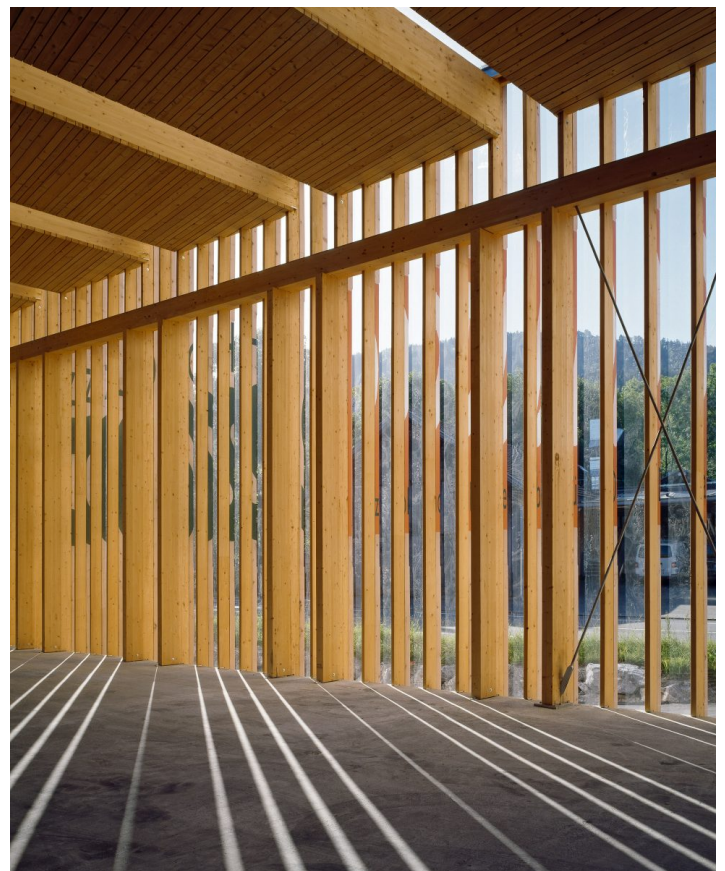
»This is an example of a modern timber construction of the highest technological level in our time.«

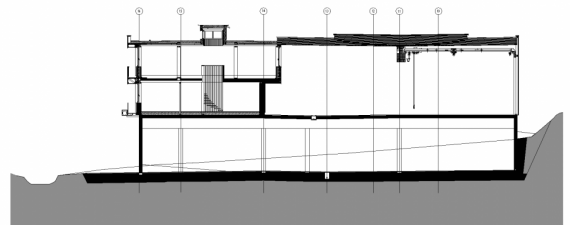
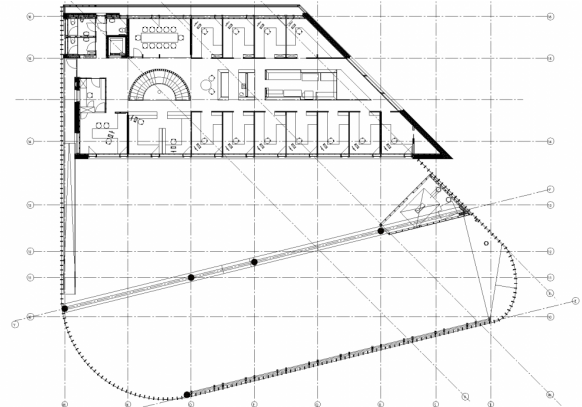
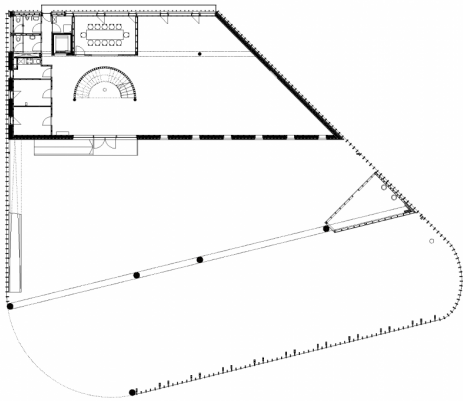
Univ.-Prof. Arch. DI Hermann Kaufmann

The challenges when elaborating the design were twofold; the formal adaptation to the irregular land and the architectural connection of the extension with the open plan factory workshop with the small office space.

A shell of vertically standing timber slats, with clamped Plexiglas, soothes the whole ensemble and reacts precisely to the predetermined geometry of the land. The rounded edges enhance the concept of 'enveloping'.

The roof of the open hall rests on the office building, which is made completely out of timber and which is placed on a massive elevated ground level. Sohm produces anchoring timber elements. They are solid timber elements which are not bonded, but connected with diagonally drilled beech dowel pins. The office building is completely constructed with such elements which form the overall impression of the interior rooms. The natural finished timber without bonding guarantees a healthy working environment.





## Project Stakeholders

### Project Leader

Arch. DI Roland Wehinger

### Colleague

Johannes Grissmann

### Cost Planning

Sohm Holzbautechnik GesmbH,  
Alberschwende

### Building Site Manager

Sohm Holzbautechnik GesmbH,  
Alberschwende

## Project Stakeholders

### Structural Engineering Timber Construction

gbd ZT GmbH, Dornbirn

### Structural Engineering Concrete Construction

Mader & Flatz ZT GmbH,  
Bregenz

## Awards

Staatspreis Architektur –  
Industrie und Gewerbe  
2010 (Auszeichnung)

## Rechte

Text Hermann Kaufmann +  
Partner ZT GmbH, Englisch:  
Bronwen Rolls

Foto Bruno Klomfar

